

M/s.
.
.
.-**RFQ NO.** SPM/BU-2/LP-22/PR-1540/2068**ISSUED ON** 19-JAN-24**DUE ON** 31-JAN-24

Dear Sirs,

We invite you to quote for the following material on F.O.R PSM site basis inclusive of all Government taxes and levies on the terms and conditions attached herewith valid for 45 days. Your offer must reach the office of the undersigned by the date mentioned above.

S. NO.	DESCRIPTION	QUANTITY	RATE
1	COLD DRAW PLUG DIFFERENT SIZES MATERIAL: TUNGSTON CARBIDE (AS PER ATTACH LIST & DRAWING)	1 LOT	

NOTE : 1. PSM will take delivery of ordered material from supplier premises having value upto Rs. 20,000/- through own arrangement.

2. Offer must be sent to the attention of Head (Procurement) on Fax no. 36770112, 35206764 or by courier service at the factory address. Procurement Direct No. (92 21) 36770121.
Email: muneeb.local@psmltd.com & shayan_proc@psmltd.com

3. Delivery lead time should be within 10 to 15 days after receipt of Purchase Order.

4. Payment will be made within 45 days after acceptance of material at PSM site.

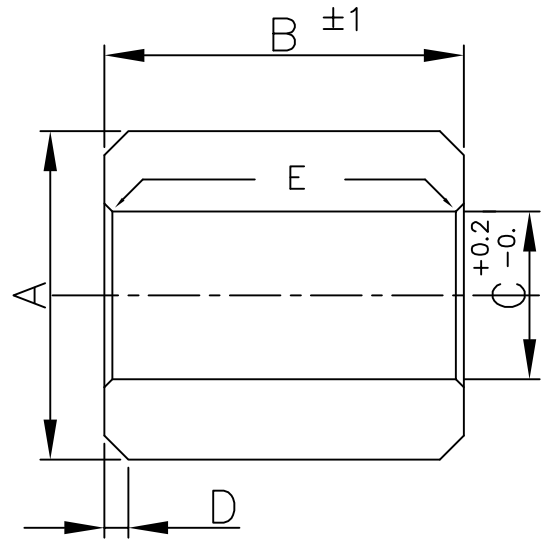
Yours Sincerely
For PSM Seamless Pipe Mill.

Deputy General Manager
(PROCUREMENT)

PR-1540 Req. of Carbide Plugs

N_o	(A) Cold Draw Plug Dia (mm)	(B) Length (mm)	(C) Bore (mm)	(D) Chamfer	(E) Bore Chamfer	Qty (Nos)	Rate	Amt	Remarks
1	38.40	50	21	3x45°	1x45°	2			
2	44.50	50	21	3x45°	1x45°	2			
3	50.60	50	21	3x45°	1x45°	2			
4	52.80	50	25	3x45°	1x45°	2			
5	49.40	50	25	3x45°	1x45°	1			
6	53.90	50	25	4x45°	1x45°	2			
6	56.60	50	25	4x45°	1x45°	2			
7	56.90	50	25	4x45°	1x45°	1			
8	57.40	50	25	4x45°	1x45°	1			
9	63.20	50	25	4x45°	1x45°	2			
10	63.70	50	25	4x45°	1x45°	1			
11	67.50	50	25	4x45°	1x45°	2			
12	67.80	50	25	4x45°	1x45°	1			
13	69.40	50	25	4x45°	1x45°	2			
14	69.90	50	25	4x45°	1x45°	1			
15	70.40	60	25	4x45°	1x45°	1			
Grand Total						25			

No	(A) Cold Draw Plug Dia (mm)	(B) Length (mm)	(C) Bore (mm)	(D) Chamfer	(E) Bore Chamfer
1	38.40	50	21	3x45°	1x45°
2	44.50	50	21	3x45°	1x45°
3	50.60	50	21	3x45°	1x45°
4	52.80	50	25	3x45°	1x45°
5	49.40	50	25	3x45°	1x45°
6	53.90	50	25	4x45°	1x45°
6	56.60	50	25	4x45°	1x45°
7	56.90	50	25	4x45°	1x45°
8	57.40	50	25	4x45°	1x45°
9	63.20	50	25	4x45°	1x45°
10	63.70	50	25	4x45°	1x45°
11	67.50	50	25	4x45°	1x45°
12	67.80	50	25	4x45°	1x45°
13	69.40	50	25	4x45°	1x45°
14	69.90	50	25	4x45°	1x45°
15	70.40	60	25	4x45°	1x45°



Technical Requirement

1. Eliminate the sharp edges
2. Lapped to a mirror finish ($R_a=0.02$)
3. Ensure the smooth transition of taper and arc connection

APPLICATION		POS.	REV. NO.	DATE	MODIFICATION			APPROVED BY	
WEIGHT Kg		SCALE 1:1	DATE 08.12.23	DRAWN BY Rizwan	CHECKED Babar	APPROVED	REFERENCE/OLD DRG. NO		
SHOP		MATERIAL			EQUIPMENT NAME		EQUIPMENT CODE NO.		
P.S.M PEOPLES STEEL MILLS LTD. KARACHI, PAKISTAN		Title SEAMLESS PIPE MILL Cold Draw Plugs				DRAWING NO.			
						PSM/CD20/40/60/100T			
		REV. 00		SHEET 1 OF 1					