

M/s.
.
.
.-**RFQ NO.** SPM/BU-2/LP-44/PR-1521/2045**ISSUED ON** 24-NOV-23**DUE ON** 04-DEC-23

Dear Sirs,

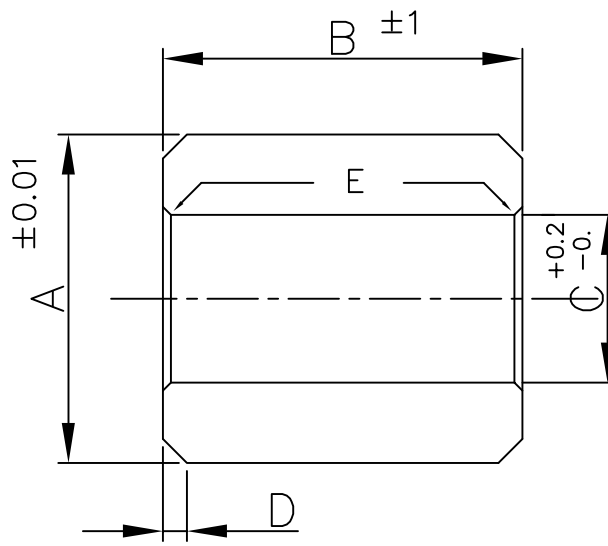
We invite you to quote for the following material on F.O.R PSM site basis inclusive of all Government taxes and levies on the terms and conditions attached herewith valid for 45 days. Your offer must reach the office of the undersigned by the date mentioned above.

S. NO.	DESCRIPTION	QUANTITY	RATE
1	COLD DRAW PLUG MATERIAL: TUNGSTON CARBIDE DIFFERENT SIZES AS PER ATTACH LIST & DRAWING	1 LOT	

- NOTE** :
1. Delivery lead time should be within 15 days after receipt of Order.
 2. Payment will be made within 45 days after acceptance of material.
 3. Offer must be sent to Attention of Head (Procurement) through Fax / Post / or Email:
m.naeem@psmltd.com, farrukh.khan@psmltd.com

Yours Sincerely
For **PSM Seamless Pipe Mill.**

Deputy General Manager
(PROCUREMENT)



№	(A) Cold Draw Plug Dia (mm)	(B) Length (mm)	(C) Bore (mm)	(D) Chamfer	(E) Bore Chamfer
1	39.70	50	21	3x45°	1x45°
2	41.10	50	21	3x45°	1x45°
3	42.40	50	21	3x45°	1x45°
4	43.40	50	21	3x45°	1x45°
5	44.60	50	21	3x45°	1x45°
6	44.80	50	21	3x45°	1x45°
7	45.00	50	21	3x45°	1x45°
8	46.40	50	21	3x45°	1x45°
9	50.70	50	21	4x45°	1x45°
10	52.80	50	25	4x45°	1x45°
11	52.90	50	25	4x45°	1x45°
12	53.10	50	25	4x45°	1x45°
13	55.10	50	25	4x45°	1x45°
14	56.10	50	25	4x45°	1x45°
15	57.40	50	25	4x45°	1x45°
16	57.60	50	25	4x45°	1x45°
17	64.00	50	25	4x45°	1x45°
18	66.40	50	25	4x45°	1x45°
19	67.80	50	25	4x45°	1x45°
20	69.40	50	25	4x45°	1x45°
21	69.90	50	25	4x45°	1x45°
22	70.40	60	25	4x45°	1x45°

Technical Requirement

1. Eliminate the sharp edges
2. Lapped to a mirror finish ($R_a=0.02$)
3. Ensure the smooth transition of taper and arc connection

APPLICATION	POS.	REV. NO.	DATE	MODIFICATION			APPROVED BY
WEIGHT Kg	SCALE 1:1	DATE 07.11.23	DRAWN BY Rizwan	CHECKED Babar	APPROVED	REFERENCE/OLD DRG. NO	
SHOP	MATERIAL			EQUIPMENT NAME		EQUIPMENT CODE NO.	
P.S.M PEOPLES STEEL MILLS LTD. KARACHI, PAKISTAN	Title SEAMLESS PIPE MILL Cold Draw Plugs			DRAWING NO.			
				PSM/CD20/40/60/100T			
REV. 00				SHEET 1 OF 1			

PR-1521 Carbide Plugs

N ^o	(A) Cold Draw Plug Dia (mm)	(B) Length (mm)	(C) Bore (mm)	(D) Chamfer	(E) Bore Chamfer	Qty (Nos)	Rate	Amt	Remarks
1	39.70	50	21	3x45°	1x45°	1			
2	41.10	50	21	3x45°	1x45°	2			
3	42.40	50	21	3x45°	1x45°	2			
4	43.40	50	21	3x45°	1x45°	2			
5	44.60	50	21	3x45°	1x45°	1			
6	44.80	50	21	3x45°	1x45°	1			
7	45.00	50	21	3x45°	1x45°	1			
8	46.40	50	21	3x45°	1x45°	1			
9	50.70	50	21	4x45°	1x45°	1			
10	52.80	50	25	4x45°	1x45°	1			
11	52.90	50	25	4x45°	1x45°	1			
12	53.10	50	25	4x45°	1x45°	1			
13	55.10	50	25	4x45°	1x45°	1			
14	56.10	50	25	4x45°	1x45°	1			
15	57.40	50	25	4x45°	1x45°	1			
16	57.60	50	25	4x45°	1x45°	1			
17	64.00	50	25	4x45°	1x45°	1			
18	66.40	50	25	4x45°	1x45°	1			
19	67.80	50	25	4x45°	1x45°	1			
20	69.40	50	25	4x45°	1x45°	1			
21	69.90	50	25	4x45°	1x45°	1			
22	70.40	60	25	4x45°	1x45°	1			
Grand Total						25			